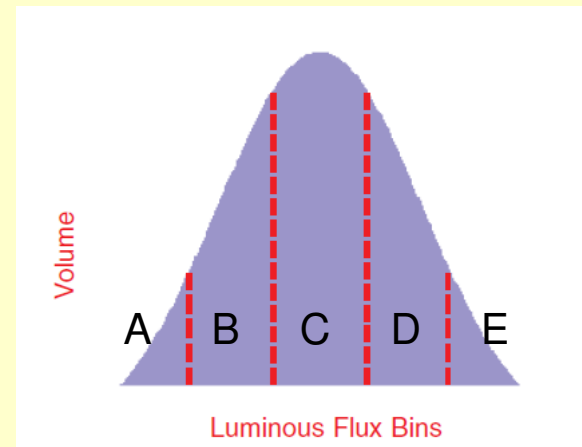
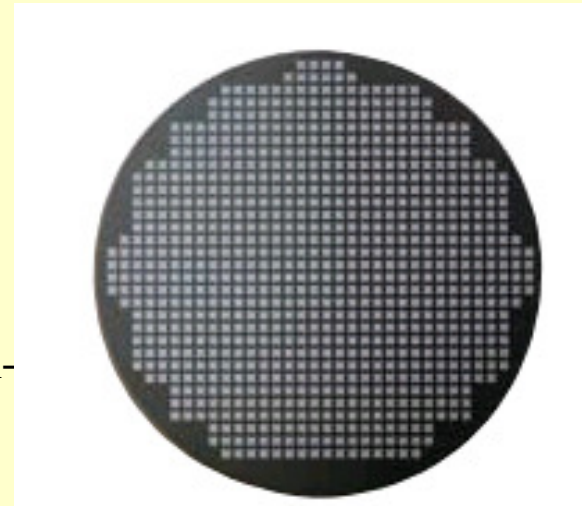


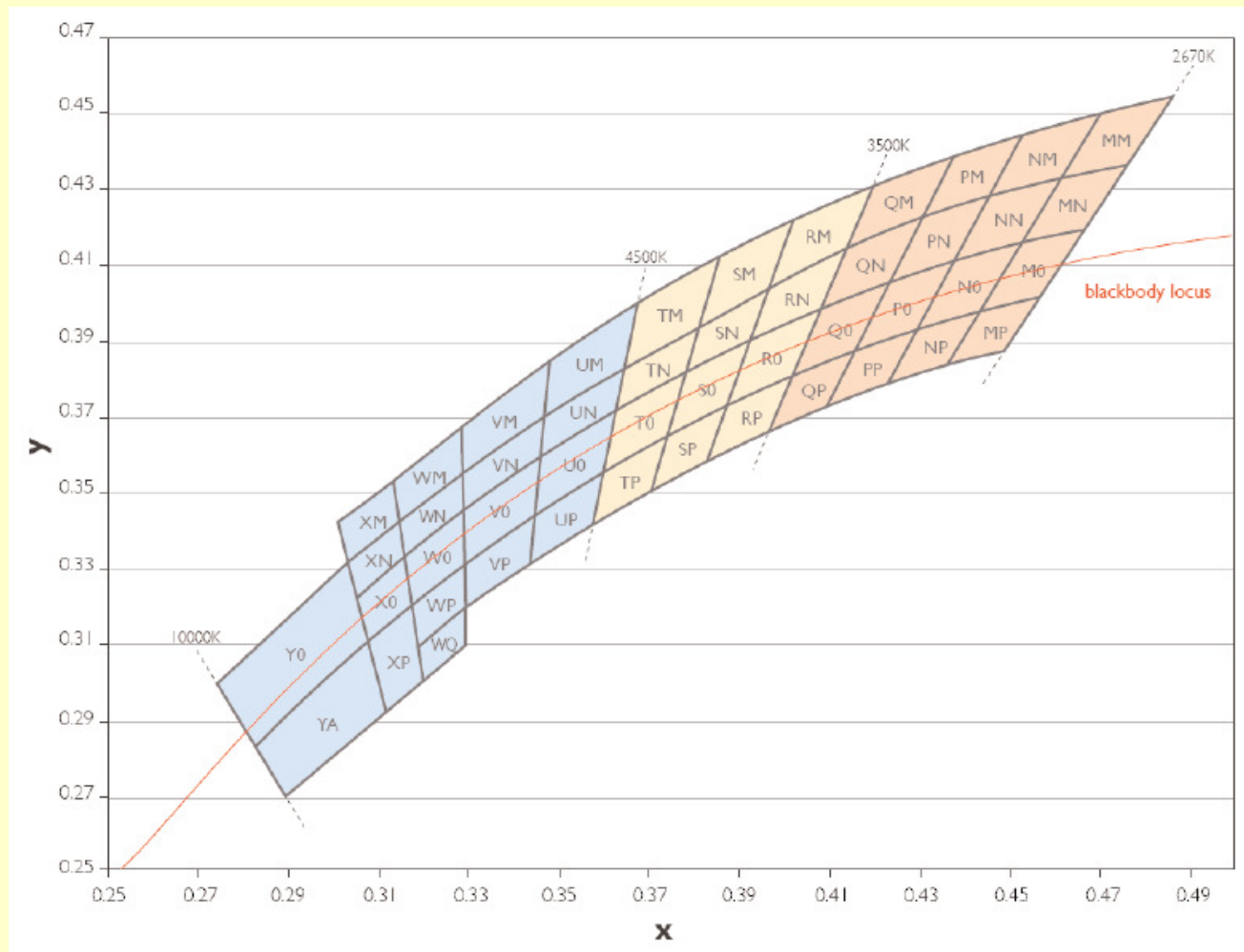
**What Is Binning And  
Why is it Important?**

# Binning Determines the Color Temperature (CCT) AND Color Rendering Index (CRI) You Get On Your Project

- LED's can produce many colors of light, primarily Blue, Cyan, Green, Amber, Orange, Red and White
- White LED's are typically classified as warm (2700K-3500K), neutral (3500K-4500K) and cool (4500K+)
- Each color consists of several different "bins"
- The performance of each LED is unique
- Each LED is binned by three measurements: flux (output), color (RGB or CCT for white) and forward voltage (power)
- Each manufacturer sells from different bins
- Tighter bins = higher cost (laws of supply + demand)



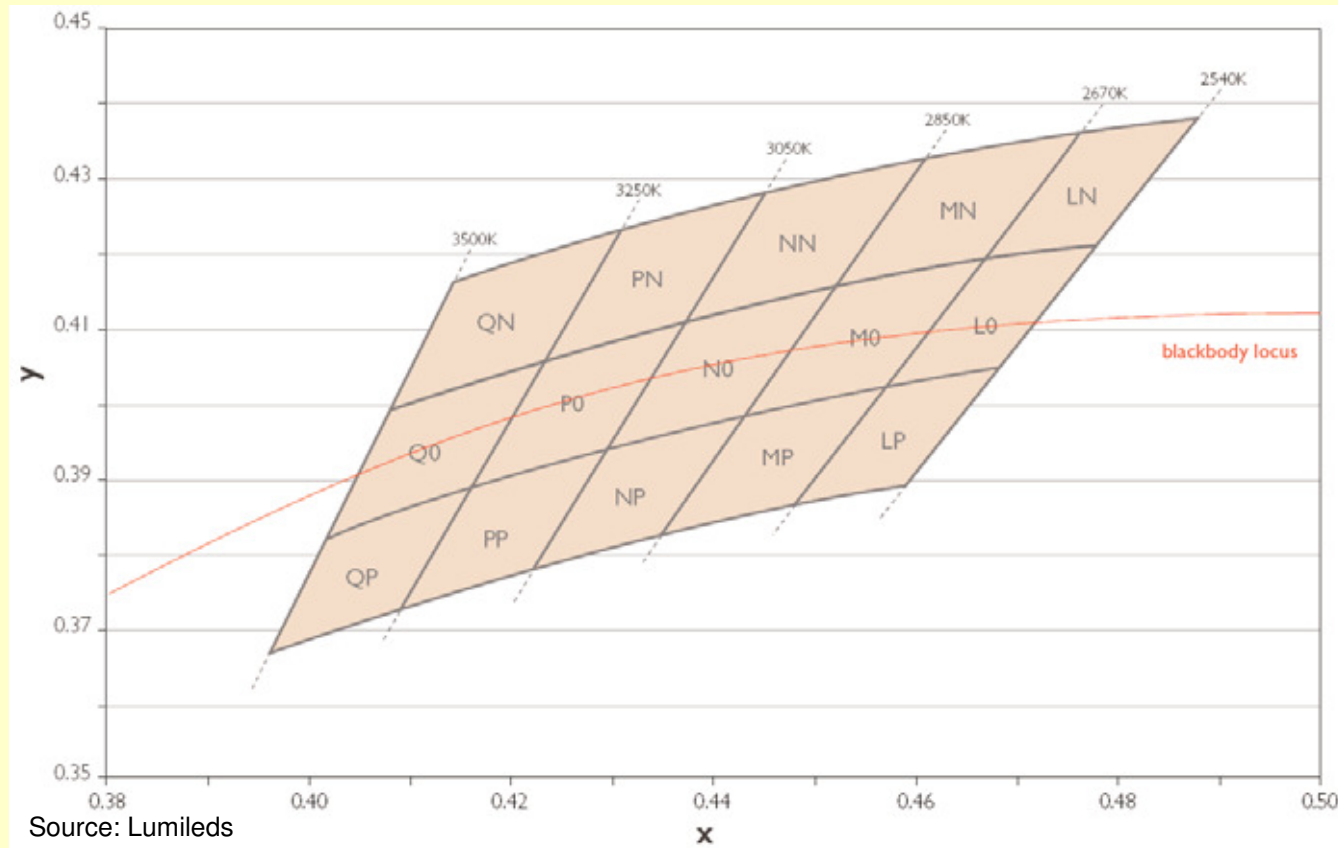
# Think All LED's are the Same? Here's 47 'Bins' of White LED's!



Typical color bin structure for white LEDs (Luxeon K2)

# Narrow That Down to 15 'Bins'

## Do You Think They All Cost the Same?



15 color bins for Warm White (Rebel), CCT range 3500K – 2540K